



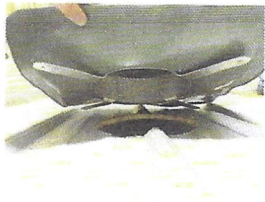
JACKED VENT



Installation Instructions



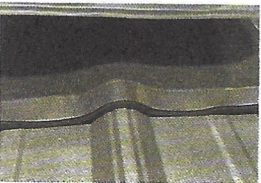
Step 1: Cut a hole through the metal roof panel and the wooden roof deck. This hole should be approximately the same size as aluminum collar in the vent (nine inch diameter). Remove any screws and sharp points or edges on the metal that might damage the vent flashing. When positioning the vent on the roof be sure that the 'UP' arrows on the attached stickers are pointing up the slope of the roof.



Step 2: Place the metal roof vent over the hole so that the aluminum collar is positioned above the hole. If a major rib obstructs proper mounting, remove a small portion of the rib to allow the foot to sit flush with the plane of the roof.



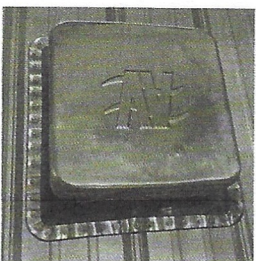
Step 3: Lift the corners of the rubber flashing to expose the end of each foot. With flashing lifted, install #10 Pancake Head screws to secure feet to roof deck.



Step 4: Once the feet have been securely fastened to the roof, form the aluminum frame of the flashing over the ribs of the metal roof panel.



Step 5: Apply sealant underneath the base of the rubber flashing.



Step 6: Install metal roofing screws through the aluminum frame of the flashing to create a water proof seal around the metal roof vent.

Note: It is recommended that a bead of silicone caulk is applied around the base of the flashing to ensure a watertight seal.

Patented—US Patent #10,907,358 & 11,649,635

Golden Rule
FASTENERS